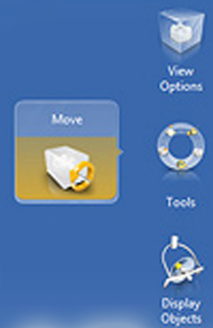
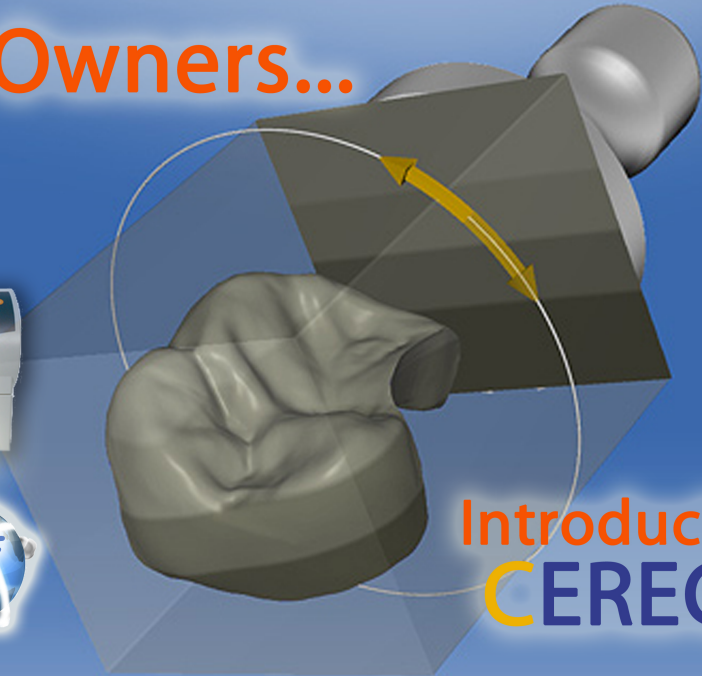


# CEREC® Owners...



## Introducing.. In-Office CEREC® Coaching

Learning is fast if you can collect all your senses and apply it immediately and repeatedly...  
-- this is what we believe at 1HourTooth.  
Our Basic and Advanced CEREC Coaching Sessions is conducted on your patient, in your office, with your machine along with your team members. We will come to you, and we guarantee results.

### Menu of Services:

#### 3-weeks in-office hands on coaching- (\$6,700.00)

- includes total of nine (9) days of 1-on-1 coaching (3 days per week, 4 hours per day)
- Lifetime of unlimited email and telephone technical support
- 2 visits of "6-month Recalls" - where a trainer will come and provide a short coaching session
- Staff, RDH, and assistant training - CEREC is a team approach, staff member will help you to sell and assistants can help you in designing
- 50% discount (1 year) on CEREC Assistant training, where you can send your assistant to our training center to be trained on designing
- 50% discount (1 year) on CEREC Assist where a trainer will come out to help you work on a case
- 50% discount (1 year) on Design Assist where you can send us your troubled cases via "cloud server" and we will help you design it
- 1HourTooth Guarantee: if we are not able to help you to perform your CEREC procedure in 1-hour\* or less, we will throw in another day for free
- (Note: with the exception of the first week, Coaching days are flexible and need not to be consecutive. This shall offer you the maximum flexibility in scheduling your first few cases without much of time constraint.)*

#### 1-week hands on coaching- (\$3,200.00)

- includes three (3) days of 1-on-1 coaching, upto 4 hours per day
- 1 year of unlimited email and telephone technical support
- 1 - 6-month Recall visit - where a trainer will return to provide a short coaching session
- 30% discount (1 year) on CEREC Assist and Design Assist and Assistant training
- (First 2 days must be consecutive, third day need to be completed within 30 days)*

#### 1-day or 2-day hands on coaching - (\$1,200.00 per day)

- includes upto 4 hours per day of 1-on-1 hands on coaching each day
- Opportunity for upgrade to 1-week or 3 weeks packages
- 10% discount (1 year) on CEREC Assist and Design Assist
- 60 days limited email and telephone technical support
- CEREC Assist\* - (\$350.00 per unit) upto 1 hour
- Our Technician/Trainer will be on-site to assist you in designing and finishing

#### Design Assist\* - (\$60.00 per unit)

\*1-hour time clock begins after tooth preparation is completed  
\*CEREC Assist and Design Assist is only available to Coaching students

